

Quick Start Guide: QLABs Virtual QUBE-Servo 2

STEP 1 Software Prerequisites

The QLABs Virtual QUBE-Servo 2 is compatible with **Windows 10 (64-bit)** and requires **MATLAB 2019a** or later with Simulink.

STEP 2 Register on Quanser Academic Portal

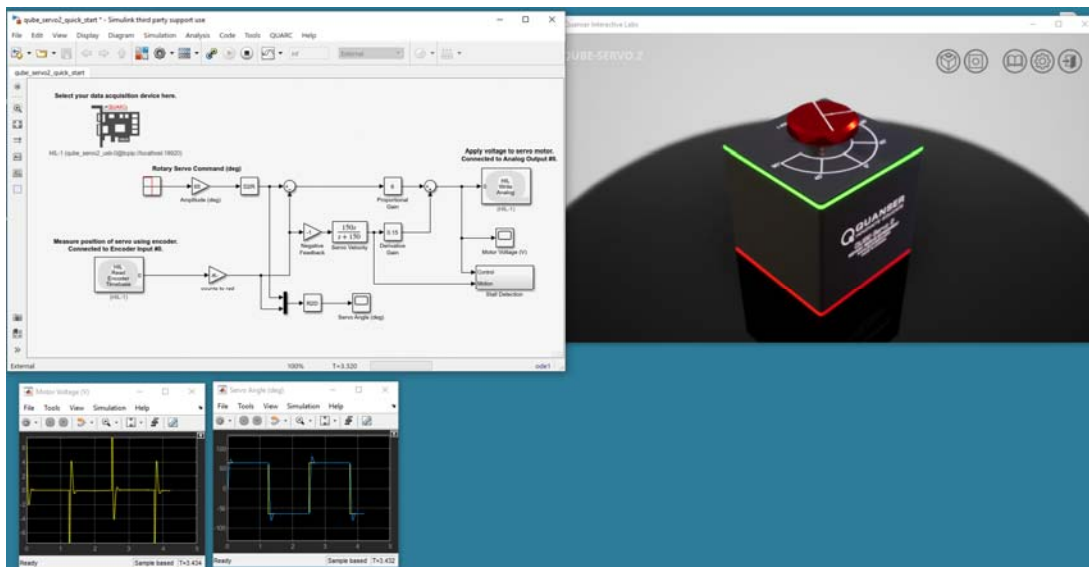
Visit the Quanser Academic Portal at <https://portal.quanser.com/Accounts/Register>. Follow the on-screen instructions to register and activate your account.

STEP 3 Download and Install QLABs

From the Quanser Academic Portal, download and install the latest version of the **Quanser Interactive Labs (QLabs)** for Windows application.

STEP 4 Testing the Virtual QUBE-Servo 2

1. Open the **Quanser Interactive Labs** application and login using your account.
2. From the product list select **QUBE-Servo 2**.
3. Select **Servo Workspace**. You should see a Virtual QUBE-Servo 2 as shown below.
4. Open the Simulink model `qube_servo2_quick_start.slx`.
5. Open the scopes labeled **Servo Angle (deg)** and **Motor Voltage (V)** and run the Simulink model.
6. Once the model is running, the inertia load disc should start rotating back and forth, tracking a ± 50 deg servo position. Your responses should look similar to the following.
7. Stop the model.



STEP 5 Download Curriculum

To download the full student version of the QLABs Virtual QUBE-Servo 2 curriculum click on the *Open Content* icon in the app.

Still Need Help? For further assistance from a Quanser engineer, contact us at tech@quanser.com