

Quick Start Guide: QLABs Virtual Aero 2

STEP 1 Software Prerequisites

QLabs Virtual Aero 2 is compatible with **Microsoft Windows 10 (64-bit)** and **MATLAB and Simulink R2021a**, or later. Visit the Virtual Aero 2 product page at www.quanser.com for the latest software support.

STEP 2 Register on Quanser Academic Portal

Visit the Quanser Academic Portal at <https://portal.quanser.com/Accounts/Register>. Follow the on-screen instructions to register and activate your account.

STEP 3 Download and Install QLABs

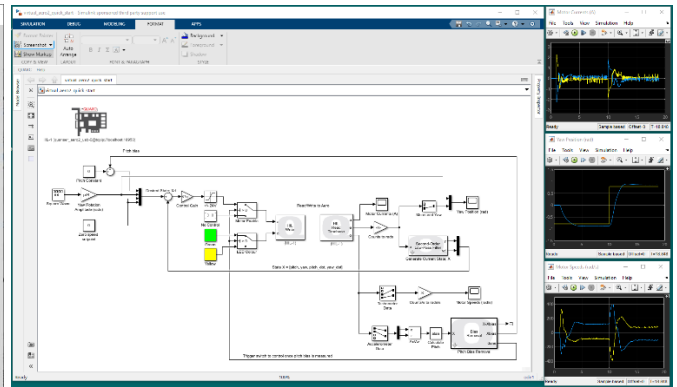
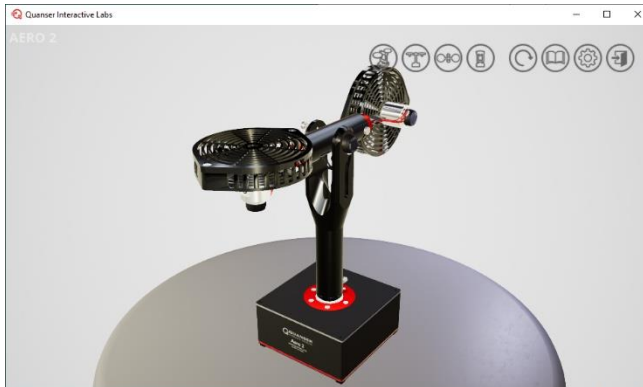
Download and install the latest version of the **Quanser Interactive Labs (QLabs)** for Windows application from the Quanser Academic Portal page at <https://portal.quanser.com/Downloads>.

STEP 4 Testing the Virtual Aero 2

1. Open the **Quanser Interactive Labs** application and login using your account.
2. From the product list select **Aero 2**, then select **Aero 2 Workspace**.
3. Click the *Options* icon and ensure the following settings are selected
 - a. Lock pitch OFF
 - b. Lock yaw OFF
 - c. Helicopter configuration ON

The Virtual Aero 2 should look as shown below

4. Open the `virtual_aero2_quick_start.slx` Simulink model.
5. Run the Simulink model.



6. Once the model is running, the Virtual Aero 2 will start to track the commanded yaw angle (the pitch is held constant). Your responses should look similar to the scope shown above.
7. Stop the model.

STEP 5 Download Curriculum

To download the full student version of the QLABs Virtual Aero 2 curriculum click on the *Open Content* icon in the app.

Still Need Help? For further assistance visit the [QLabs support page](#) or contact us at digital@quanser.com